

Professional Passive Fire Protection

Product Range



- S290 Acoustic Intumescent Sealant
- S291 Intumescent Pressure Sealant
- Socket Box Protection
- Pipe Wraps
- Pipe Collars
- FR Mineral Wool Board



DISTRIBUTOR

Kestral Construction Products

Reginald Road Industrial Estate
Units 21 & 22 Brindley Road
Sutton
St. Helens
Merseyside
WA9 4HY

Tel: 01744 830001
Fax: 01744 830002
www.kestral.net

www.asf-products.co.uk

Professional Passive Fire Protection

FR Mineral Wool Board

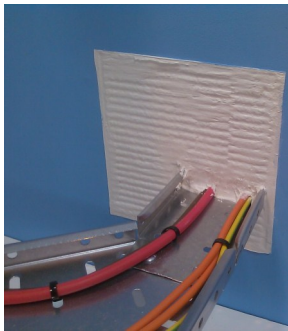


Air - Sound - Fire



FR Mineral Wool Board

ASF FR Mineral Wool Boards have been designed to maintain the fire resistance of separating walls and floors where they are breached by single or multiple building services.



The board consists of a rigid mineral wool core, over-coated with an ablative fire retardant coating on 1 or 2 sides. The top coat provides an important barrier to the passage of hot gases through the thickness of the board.

Selection of the board coated 1 or 2 sides is determined by installation considerations and fire resistance requirements.

- 4 hour rating
- Simple low cost installation
- Approved for pipes, cable bunches and ducting
- Tested in accordance with:

EN1363-1:1999 & EN1366-3:2004

BS476-Part 20:1987



Certificate of Approval No. CF834

www.warringtonfire.net/certifire

FR Board Sizes

1200mm x 600mm x 60mm
Coated both sides or on one side.

1200mm x 600mm x 50mm
Coated both sides or on one side

Packaging

Board Thickness & Coating	Sleeve Colour	Boards per Pallet
50mm - coated both sides	Clear	80
50mm - coated one side	Blue	80
60mm - coated both sides	Black	72
60mm - coated one side	Green	72

Fire Performance

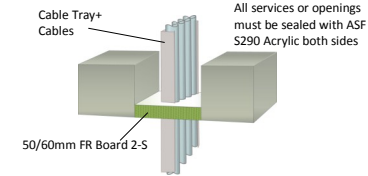
Up to 120 minutes fire resistance in 100mm and 130mm gypsum board drywalls.*

Up to 240 minutes fire resistance in concrete/block walls. *

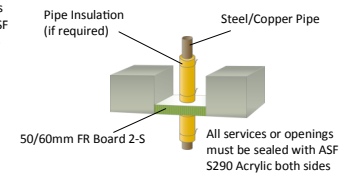
Up to 240 minutes fire resistance in concrete floors. *

* A full approval of the product is contained in Certifire Certificate of Approval No. CF834

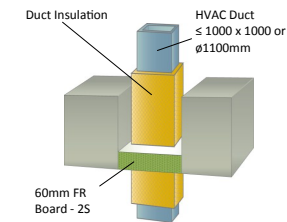
Cable tray and cables in concrete floors



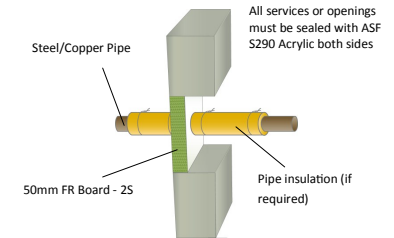
Metallic pipe in concrete floors



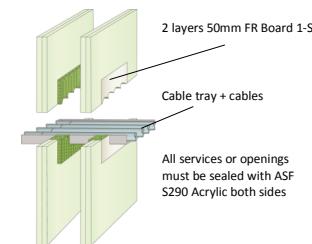
Steel duct in concrete floors



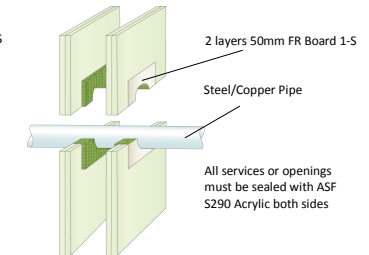
Metallic pipe in solid walls (the board can be installed centrally or flush at either face)



Cable tray and cables in gypsum stud walls (no framing out is required)



Metallic pipe in gypsum stud wall



Steel duct in gypsum stud walls

